

# The Glasgow School of Art

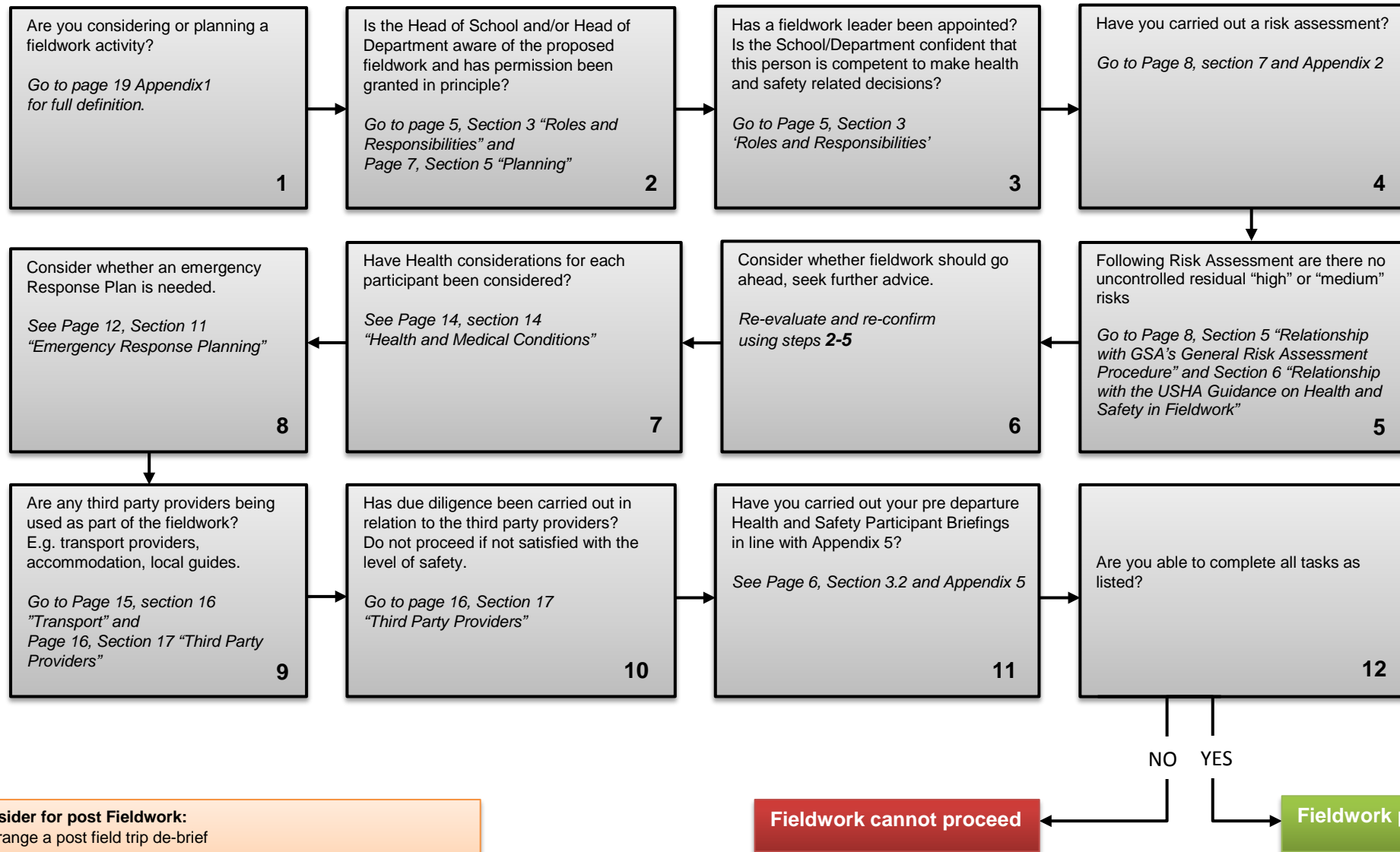
## Health and Safety in Fieldwork Procedure - Flowchart

August 2016

Policy Control

|                           |   |
|---------------------------|---|
| Title                     | Health and Safety in Fieldwork Procedure Flowchart                                |
| Date Approved             | October 2016  |
| Approving Bodies          | Occupational Health and Safety Committee  |
| Implementation Date       | 3 October 2016  |
| Supersedes                | N/A   |
| Supporting Policy         | Health and Safety in Fieldwork Procedure  |
| Review Date               | August 2019   |
| Author                    | Brian McDade, Health and Safety Officer   |
| Date of Impact Assessment | tbc   |
| Benchmarking              | USHA<br>University of Bristol<br>University of Essex<br>Liverpool Hope University |

### Glasgow School of Art Health and Safety Fieldwork Flowchart



**Consider for post Fieldwork:**

- Arrange a post field trip de-brief
- Document your review
- Send any Accident Report Forms to the Health and Safety Team