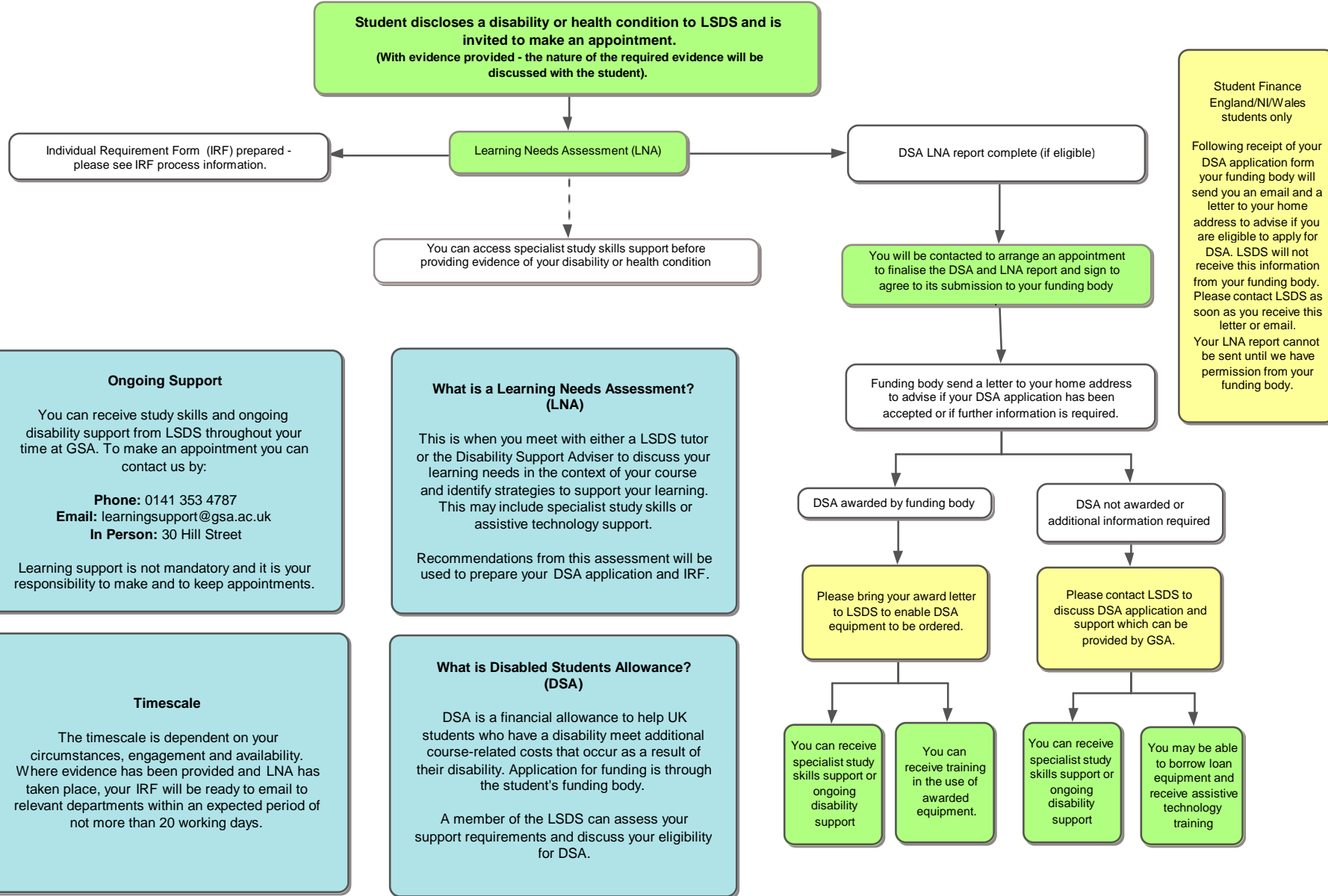


Disabled Students Allowance (DSA) Process - Information for UK Students Learning Support and Development Service (LSDS)



Student Finance England/N/Wales students only

Following receipt of your DSA application form your funding body will send you an email and a letter to your home address to advise if you are eligible to apply for DSA. LSDS will not receive this information from your funding body. Please contact LSDS as soon as you receive this letter or email. Your LNA report cannot be sent until we have permission from your funding body.

Ongoing Support

You can receive study skills and ongoing disability support from LSDS throughout your time at GSA. To make an appointment you can contact us by:

Phone: 0141 353 4787
Email: learningsupport@gsa.ac.uk
In Person: 30 Hill Street

Learning support is not mandatory and it is your responsibility to make and to keep appointments.

What is a Learning Needs Assessment? (LNA)

This is when you meet with either a LSDS tutor or the Disability Support Adviser to discuss your learning needs in the context of your course and identify strategies to support your learning. This may include specialist study skills or assistive technology support.

Recommendations from this assessment will be used to prepare your DSA application and IRF.

Timescale

The timescale is dependent on your circumstances, engagement and availability. Where evidence has been provided and LNA has taken place, your IRF will be ready to email to relevant departments within an expected period of not more than 20 working days.

What is Disabled Students Allowance? (DSA)

DSA is a financial allowance to help UK students who have a disability meet additional course-related costs that occur as a result of their disability. Application for funding is through the student's funding body.

A member of the LSDS can assess your support requirements and discuss your eligibility for DSA.