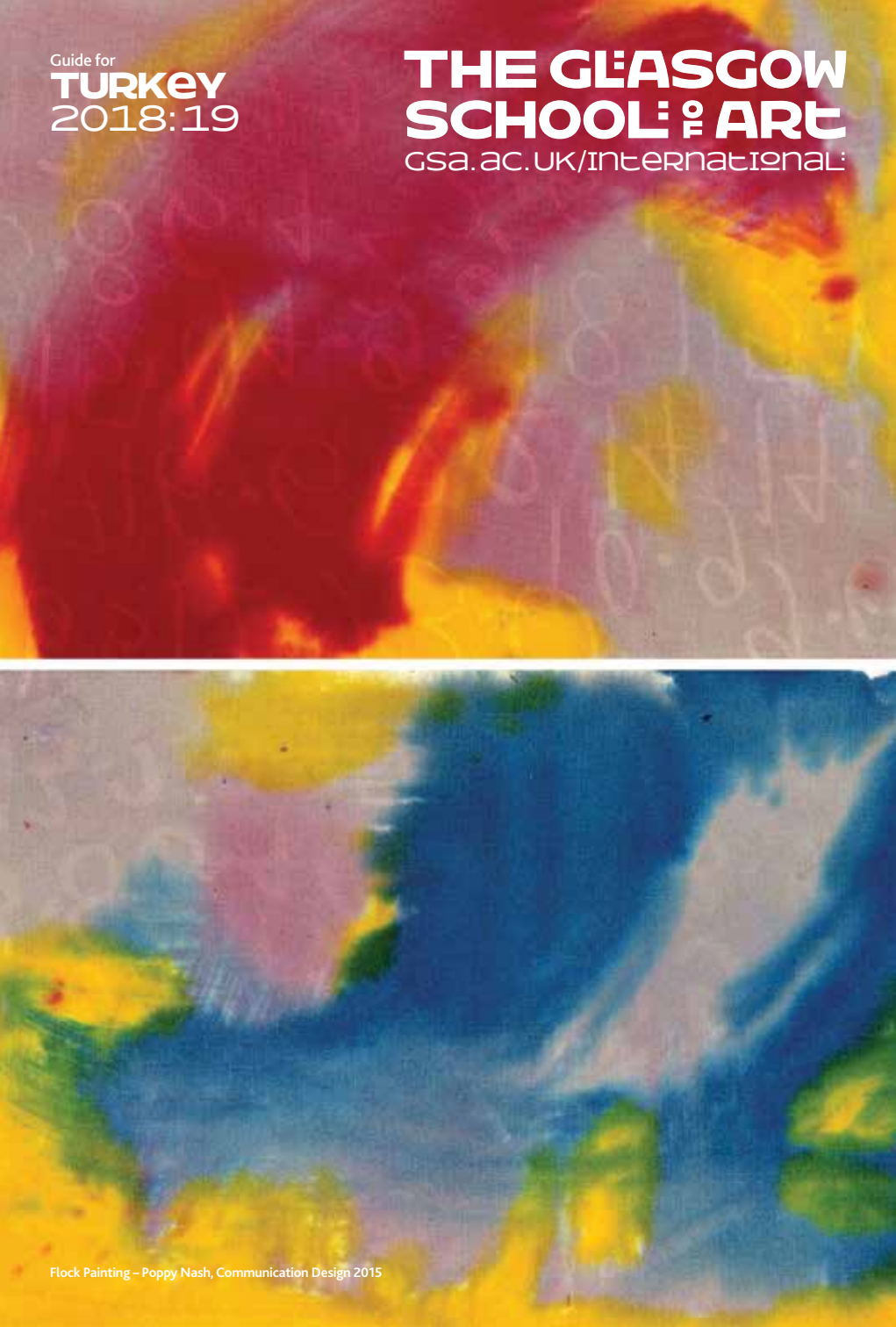


Guide for  
**TURKEY**  
2018:19

**THE GLASGOW**  
**SCHOOL OF ART**  
gsa.ac.uk/international:



**HOW TO APPLY:**

[www.gsa.ac.uk/howtoapply](http://www.gsa.ac.uk/howtoapply)

**Through UCAS:** All students (except Study Abroad & Exchange) applying for the GSA's undergraduate programmes should apply online at: [www.ucas.com](http://www.ucas.com). The GSA's institutional code is **G43**. The deadline for applications is 30 June, although we advise all students to apply by 15 January. Additionally students will need to upload Supporting Visual Material at [application.gsa.ac.uk](http://application.gsa.ac.uk) in order to complete the initial stage of their application. Most undergraduate programmes conduct a portfolio interview with students before offering them a place. For students unable to come to GSA this is usually conducted by telephone or online meeting/skype.

**Direct:** We accept direct applications – on the relevant official application form – for all our other programmes – Postgraduate; Continuing Education (eg Portfolio Preparation); Exchange; Study Abroad; Summer School. These application forms can be found on our website. The portfolio is usually submitted in digital format – for Postgraduate applications this is done at [application.gsa.ac.uk](http://application.gsa.ac.uk)

**HELP WITH YOUR APPLICATION**

Applying to the GSA is easy and straightforward. However, should you need help in applying the following are here to help:

**Admissions team at GSA:** [registry@gsa.ac.uk](mailto:registry@gsa.ac.uk)  
[www.facebook.com/gsaeregistry](http://www.facebook.com/gsaeregistry)  
 Or our official representatives in your country:  
**British Side:** [www.britishside-edu.com](http://www.britishside-edu.com)  
**Atec Yurtdisi Egitim Danismanligi:**  
[www.atec.com.tr](http://www.atec.com.tr)  
**IDP Education:** [www.turkey.idp.com](http://www.turkey.idp.com)

**VISAS, WORK & HEALTH**

- Students from Turkey coming to study in the UK will need to apply for prior Entry Clearance (a Tier 4 General Student Visa for programmes over six months) before travelling to the UK.
- Students with the correct stamp in their passports are able to work for up to 20 hours a week during the term time and full time in vacations.
- Students coming for programmes of study of under 6 months may apply for a Short Term Study Visa.
- Students may not work with a Short Term Study Visa or extend their stay.
- When making an application for a Tier 4 General Student Visa, a fee will be levied to cover access to the comprehensive health care provided by the National Health Service (NHS).

**Fees & Finance**

[www.gsa.ac.uk/finance](http://www.gsa.ac.uk/finance)

**Tuition Fees (New International Students) 2017/18****Undergraduate Students**

- Full-degree/International Foundation students £15,240 per year. This fee will be fixed for the duration of the programme.
- Study Abroad students £13,800 full year, £6,900 per semester

**Postgraduate Students**

- Most one-year Masters programmes - £15,840
- MSc Medical Visualisation & Human Anatomy - £25,020
- Two-year taught Masters programmes - £15,840 per year. Fee will be the same in both years.
- Research Degrees - £14,600 per year. Fee will remain the same in all years of study.

Please note that these fees are subject to change, and applicants should consult the GSA website for up-to-date information: [www.gsa.ac.uk/finance](http://www.gsa.ac.uk/finance)

**OTHER COSTS**

In addition to your tuition fees you will incur other costs whilst studying at GSA.

You should budget for the following:

- Travel to Glasgow: £200 - 400
- Accommodation: £95 per week
- Other living expenses (e.g. telephone, food, entertainment): about £100 per week
- Studio/Material costs: £200 - 600 per year
- Field Trips (some courses): £300 - 800 in the year of the field trip.

The UKVI require you to show evidence of £1,015/month for living expenses at the time of your visa application. You will not be able to rely on income from potential employment in the UK to provide evidence of this.

**SCHOLARSHIPS**

Further details on all scholarships are available at: [www.gsa.ac.uk/scholarships](http://www.gsa.ac.uk/scholarships)

**ENTRY REQUIREMENTS****English Language**

- International Foundation Programme: IELTS 5.5 (min 5.0)
- Most Art & Design Programmes: IELTS 6.0 (min 5.5)
- Architecture and some PG Programmes: IELTS 6.5 (min 5.5)

For UKVI purposes this must be a specific Academic IELTS for UKVI test.

**Portfolios**

**Undergraduate:** See [www.gsa.ac.uk/howtoapply](http://www.gsa.ac.uk/howtoapply) for a guide to requirements.

**Postgraduate:** See [www.gsa.ac.uk/applpyg](http://www.gsa.ac.uk/applpyg) for individual programme requirements.

**Academic**

**Undergraduate:** Students need to have a good pass Devlet Lise Diploması (70% shown over 100). Students with an International Baccalaureate should have 30 points overall in the diploma for most programmes – see the GSA website for point breakdown.  
**Postgraduate:** Students need a GPA of over 2.5 (63%) in their Lisans Diploması.

Entry requirements are subject to change, and applicants should consult the GSA website for up-to-date requirements: [www.gsa.ac.uk/howtoapply](http://www.gsa.ac.uk/howtoapply)

**AWARDS**

All GSA degree programmes are validated by the University of Glasgow. Established in 1451, the University of Glasgow is a member of the prestigious Russell Group of leading UK research universities. [www.gla.ac.uk](http://www.gla.ac.uk)