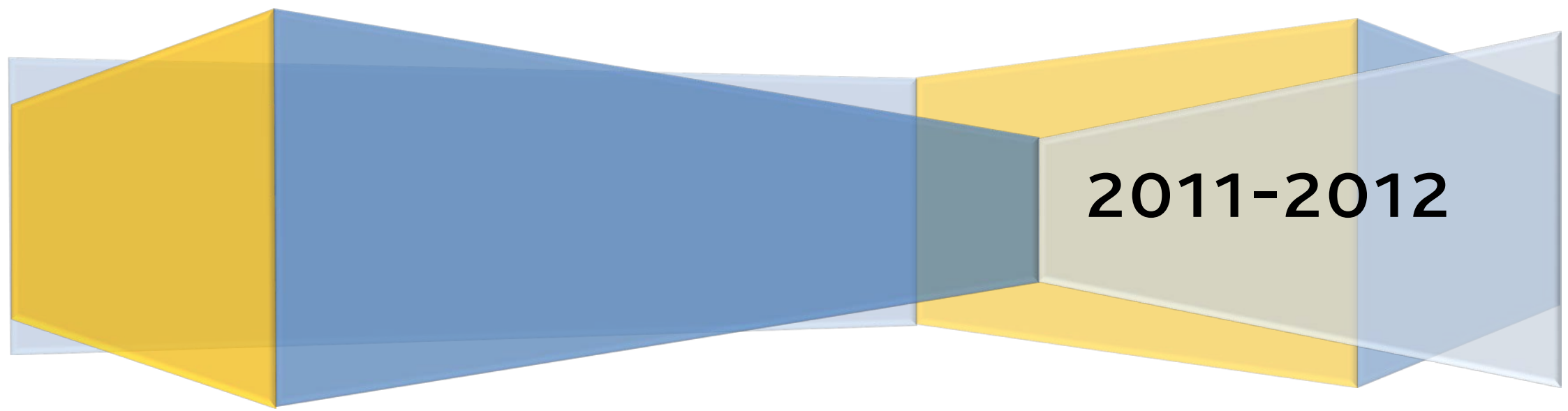


Equality statistics report: Students

The Glasgow School of Art



2011-2012



Overview

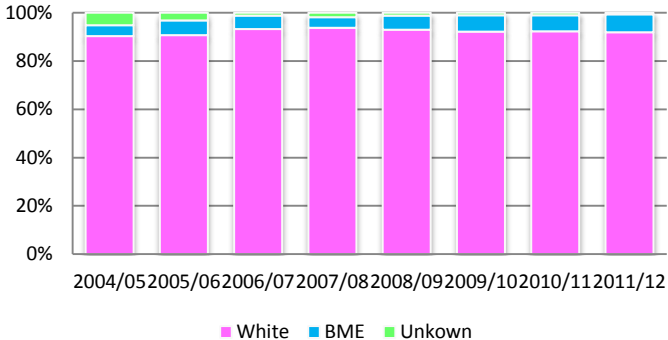
The current data evidences that GSA continues to increase the number of students from Black and Minority Ethnic (BME) groups, however the number of UK domiciled students from BME groups is relatively low. The School has identified an equality outcome to address this.

The School maintains a high proportion of disabled students. UCAS acceptances continue to be proportionate with UCAS applications across the protected characteristics: this suggests that there is no undue bias in admissions. GSA also maintains a sexual identity profile in line with the UK average. These trends align with the institutional aims of GSA. An area that may cause concern in the future is the increasing gender imbalance in UCAS applications. This is affecting all Higher Education Institutions and is not specific to GSA and its programmes.

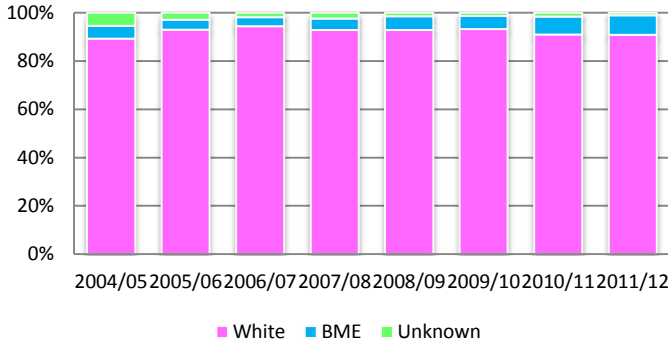
A detailed examination of the data indicates some fluctuation. However, provided this is not sustained over time it is not a cause for concern. There are also some groups with low populations and volatility must be expected. With this in mind, there is a consistency to the results which corresponds with the expectations and demographics of GSA.



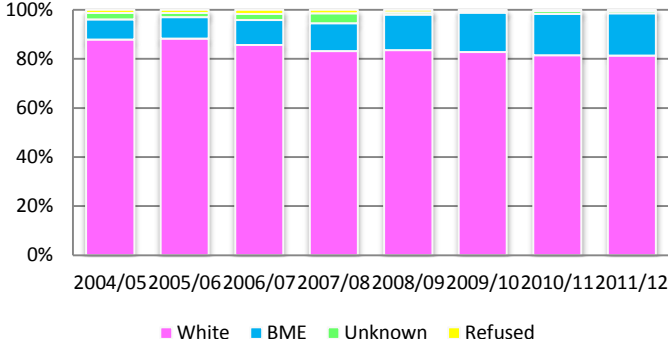
UCAS Applications - Ethnicity



UCAS Acceptances - Ethnicity



All Current Students - Ethnicity

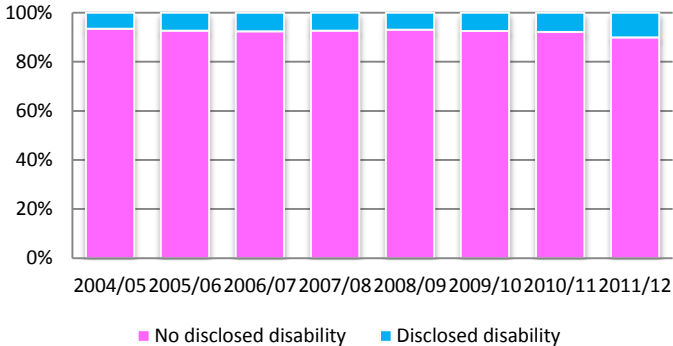


Observations:

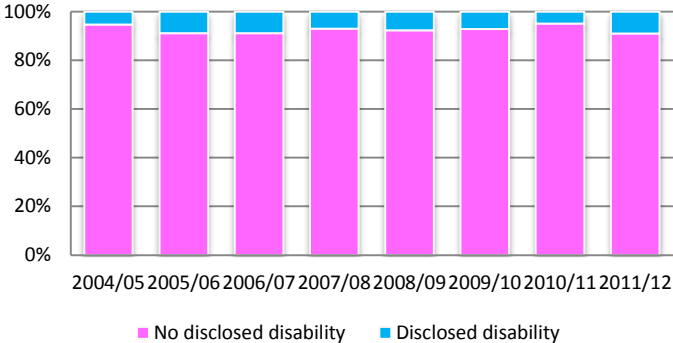
- Numbers of BME applicants and acceptances have remained relatively similar and stable over the past five years
- Numbers of BME students in the total student body have increased steadily



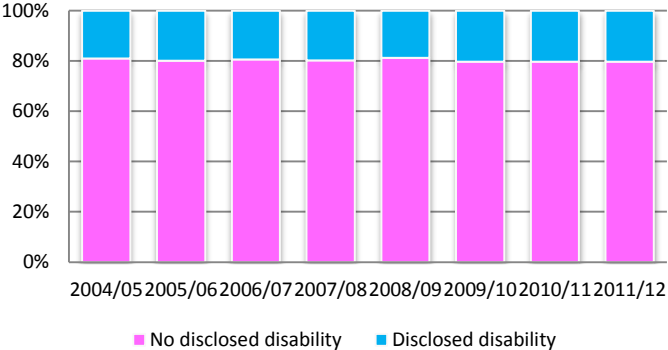
UCAS Applicants - Disability



UCAS Acceptances - Disability



All Current Students - Disability

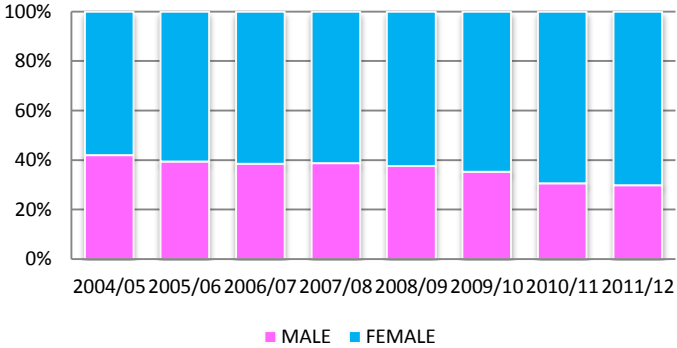


Observations:

- The numbers of applicants disclosing disability have increased steadily, with a significant increase in acceptances on last year
- Of the total student body, the number of students disclosing disability has remained consistent year on year



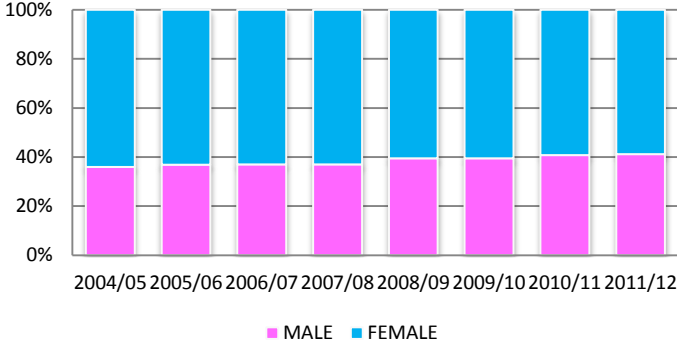
UCAS Applications - Gender



UCAS Acceptances - Gender



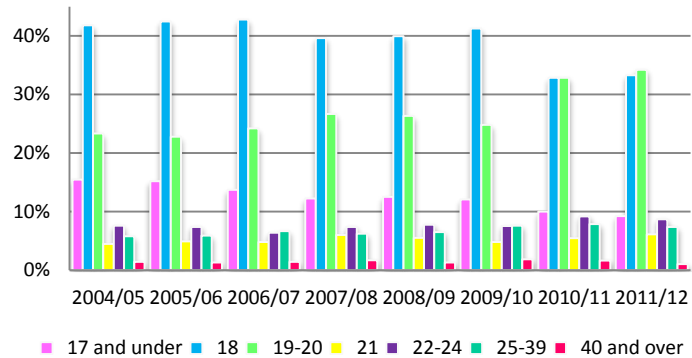
All Current Students - Gender



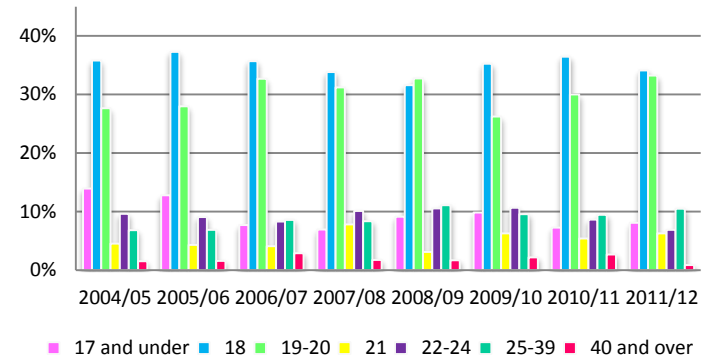
Observations:

- The number of male applicants to GSA has decreased gradually over the last four years, with a third of applicants being male this year
- The number of acceptances of both genders have in general been proportionate to applications
- The ratio of male to female in the total student body has remained in the region of 40:60

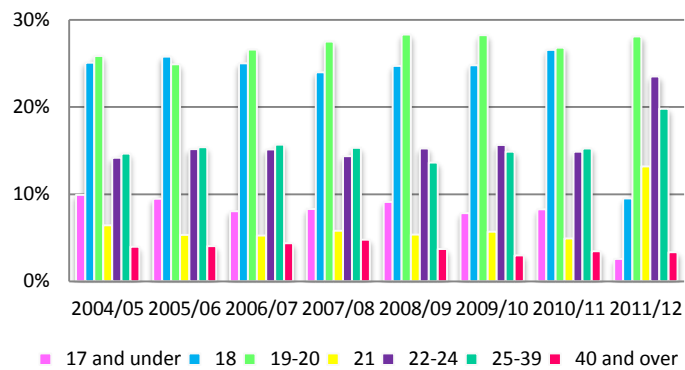
UCAS Applications - Age



UCAS Acceptances - Age



All current students - Age



Observations:

- The number of school leavers applying to GSA has fallen, suggesting that more students are seeking to gain experience prior to application
- Student acceptances are concentrated in the 18-20 age groups
- Students aged 21-39 are more widely represented in GSA as a whole, reflecting a growing graduate community



| UCAS APPLICATIONS | | | | | | | | | | | | | | | | | |
|--------------------------|--|-------------------|-------|------------------|-------|------------------|-------|------------------|-------|------------------|-------|------------------|-------|------------------|-------|------------------|-------|
| | | Entry Year | | | | | | | | | | | | | | | |
| | | 2004/2005 | | 2005/2006 | | 2006/2007 | | 2007/2008 | | 2008/2009 | | 2009/2010 | | 2010/2011 | | 2011/2012 | |
| Ethnicity | White | 2158 | 90.4% | 2098 | 90.7% | 2039 | 93.2% | 1953 | 93.7% | 1929 | 92.9% | 1812 | 92.2% | 2651 | 92.3% | 2665 | 91.9% |
| | Black, Asian, Chinese, Mixed Race | 106 | 4.4% | 142 | 6.1% | 122 | 5.6% | 91 | 4.4% | 121 | 5.8% | 132 | 6.7% | 189 | 6.6% | 214 | 7.4% |
| | Unknown | 124 | 5.2% | 74 | 3.2% | 26 | 1.2% | 40 | 1.9% | 26 | 1.3% | 21 | 1.1% | 31 | 1.1% | 21 | 0.7% |
| TOTAL | | 2388 | | 2314 | | 2187 | | 2084 | | 2076 | | 1965 | | 2871 | | 2900 | |
| UCAS ACCEPTANCES | | | | | | | | | | | | | | | | | |
| | | Entry Year | | | | | | | | | | | | | | | |
| | | 2004/2005 | | 2005/2006 | | 2006/2007 | | 2007/2008 | | 2008/2009 | | 2009/2010 | | 2010/2011 | | 2011/2012 | |
| Ethnicity | White | 292 | 89.3% | 291 | 93.0% | 255 | 94.4% | 256 | 92.8% | 256 | 92.8% | 273 | 93.2% | 270 | 90.9% | 239 | 90.9% |
| | Black, Asian, Chinese, Mixed Race | 17 | 5.2% | 13 | 4.2% | 10 | 3.7% | 13 | 4.7% | 16 | 5.8% | 16 | 5.5% | 22 | 7.4% | 21 | 8.0% |
| | Unknown | 18 | 5.5% | 9 | 2.9% | 5 | 1.9% | 7 | 2.5% | 4 | 1.4% | 4 | 1.4% | 5 | 1.7% | 3 | 1.1% |
| TOTAL | | 327 | | 313 | | 270 | | 276 | | 276 | | 293 | | 297 | | 263 | |
| ALL STUDENTS | | | | | | | | | | | | | | | | | |
| | | Entry Year | | | | | | | | | | | | | | | |
| | | 2004/2005 | | 2005/2006 | | 2006/2007 | | 2007/2008 | | 2008/2009 | | 2009/2010 | | 2010/2011 | | 2011/2012 | |
| Ethnicity | White | 1575 | 87.7% | 1610 | 88.1% | 1554 | 85.4% | 1543 | 82.9% | 1674 | 83.6% | 1692 | 82.7% | 1612 | 81.5% | 1605 | 81.3% |
| | Black, Asian, Chinese, Mixed Race | 147 | 8.2% | 162 | 8.9% | 185 | 10.2% | 211 | 11.3% | 289 | 14.4% | 329 | 16.1% | 332 | 16.8% | 342 | 17.3% |
| | Unknown | 49 | 2.7% | 32 | 1.8% | 47 | 2.6% | 78 | 4.2% | 19 | 0.9% | 7 | 0.3% | 23 | 1.2% | 16 | 0.8% |
| | Refused | 24 | 1.3% | 24 | 1.3% | 33 | 1.8% | 29 | 1.6% | 21 | 1.0% | 17 | 0.8% | 11 | 0.6% | 12 | 0.6% |
| TOTAL | | 1795 | | 1828 | | 1819 | | 1861 | | 2003 | | 2045 | | 1978 | | 1975 | |



| UCAS APPLICATIONS | | Entry Year | | | | | | | | | | | | | | | |
|-------------------|-------------------------|------------|-------|-----------|-------|-----------|-------|-----------|-------|-----------|-------|-----------|-------|-----------|-------|-----------|-------|
| Disability | | 2004/2005 | | 2005/2006 | | 2006/2007 | | 2007/2008 | | 2008/2009 | | 2009/2010 | | 2010/2011 | | 2011/2012 | |
| | No disclosed disability | 2594 | 93.4% | 2513 | 92.7% | 2372 | 92.4% | 2340 | 92.7% | 2366 | 93.7% | 2198 | 92.5% | 3221 | 92.2% | 3257 | 89.9% |
| | Disclosed disability | 183 | 6.6% | 198 | 7.3% | 194 | 7.6% | 184 | 7.3% | 175 | 6.9% | 177 | 7.5% | 274 | 7.8% | 366 | 10.1% |
| | Unknown | 0 | 0.0% | 0 | 0.0% | 0 | 0.0% | 0 | 0.0% | 0 | 0.0% | 0 | 0.0% | 0 | 0.0% | 0 | 0.0% |
| TOTAL | | 2777 | | 2711 | | 2566 | | 2524 | | 2541 | | 2375 | | 3495 | | 3623 | |
| UCAS ACCEPTANCES | | Entry Year | | | | | | | | | | | | | | | |
| Disability | | 2004/2005 | | 2005/2006 | | 2006/2007 | | 2007/2008 | | 2008/2009 | | 2009/2010 | | 2010/2011 | | 2011/2012 | |
| | No disclosed disability | 373 | 94.7% | 342 | 91.2% | 309 | 91.2% | 322 | 93.1% | 324 | 92.3% | 340 | 92.9% | 352 | 95.1% | 304 | 91.0% |
| | Disclosed disability | 21 | 5.3% | 33 | 8.8% | 30 | 8.8% | 24 | 6.9% | 27 | 7.7% | 26 | 7.1% | 18 | 4.9% | 30 | 9.0% |
| | Unknown | 0 | 0.0% | 0 | 0.0% | 0 | 0.0% | 0 | 0.0% | 0 | 0.0% | 0 | 0.0% | 0 | 0.0% | 0 | 0.0% |
| TOTAL | | 394 | | 375 | | 339 | | 346 | | 351 | | 366 | | 370 | | 334 | |
| ALL STUDENTS | | Entry Year | | | | | | | | | | | | | | | |
| Disability | | 2004/2005 | | 2005/2006 | | 2006/2007 | | 2007/2008 | | 2008/2009 | | 2009/2010 | | 2010/2011 | | 2011/2012 | |
| | No disclosed disability | 1454 | 81.0% | 1464 | 80.1% | 1463 | 80.4% | 1488 | 80.0% | 1620 | 80.9% | 1628 | 79.6% | 1564 | 79.1% | 1574 | 79.7% |
| | Disclosed disability | 341 | 19.0% | 362 | 19.8% | 351 | 19.3% | 367 | 19.7% | 373 | 18.6% | 412 | 20.1% | 395 | 20.0% | 401 | 20.3% |
| | Unknown | 0 | 0.0% | 2 | 0.1% | 5 | 0.3% | 6 | 0.3% | 10 | 0.5% | 5 | 0.2% | 19 | 1.0% | 0 | 0.0% |
| TOTAL | | 1795 | | 1828 | | 1819 | | 1861 | | 2003 | | 2045 | | 1978 | | 1975 | |

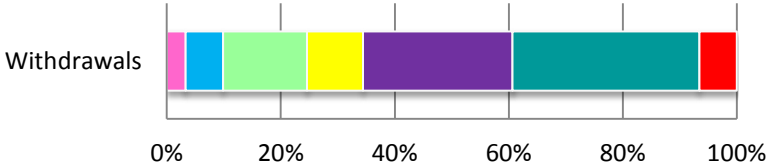


| | | UCAS APPLICATIONS | | | | | | | | | | | | | | | | |
|---------------|---------------|--------------------------|------|------------------|------|------------------|------|------------------|------|------------------|------|------------------|------|------------------|------|------------------|------|-------|
| | | Entry Year | | | | | | | | | | | | | | | | |
| Gender | | 2004/2005 | | 2005/2006 | | 2006/2007 | | 2007/2008 | | 2008/2009 | | 2009/2010 | | 2010/2011 | | 2011/2012 | | |
| | Male | | 1166 | 42.0% | 1067 | 39.4% | 991 | 38.6% | 978 | 38.7% | 956 | 37.6% | 840 | 35.4% | 1071 | 30.6% | 1084 | 29.9% |
| | Female | | 1611 | 58.0% | 1644 | 60.6% | 1575 | 61.4% | 1546 | 61.3% | 1585 | 62.4% | 1535 | 64.6% | 2424 | 69.4% | 2539 | 70.1% |
| TOTAL | | 2777 | | 2711 | | 2566 | | 2524 | | 2541 | | 2375 | | 3495 | | 3623 | | |
| | | UCAS ACCEPTANCES | | | | | | | | | | | | | | | | |
| | | Entry Year | | | | | | | | | | | | | | | | |
| Gender | | 2004/2005 | | 2005/2006 | | 2006/2007 | | 2007/2008 | | 2008/2009 | | 2009/2010 | | 2010/2011 | | 2011/2012 | | |
| | Male | | 155 | 39.3% | 138 | 36.8% | 130 | 38.3% | 124 | 35.8% | 129 | 36.8% | 120 | 32.8% | 123 | 33.2% | 118 | 35.3% |
| | Female | | 239 | 60.7% | 237 | 63.2% | 209 | 61.7% | 222 | 64.2% | 222 | 63.2% | 246 | 67.2% | 247 | 66.8% | 216 | 64.7% |
| TOTAL | | 394 | | 375 | | 339 | | 346 | | 351 | | 366 | | 370 | | 334 | | |
| | | ALL STUDENTS | | | | | | | | | | | | | | | | |
| | | Entry Year | | | | | | | | | | | | | | | | |
| Gender | | 2004/2005 | | 2005/2006 | | 2006/2007 | | 2007/2008 | | 2008/2009 | | 2009/2010 | | 2010/2011 | | 2011/2012 | | |
| | Male | | 646 | 36.0% | 675 | 36.9% | 673 | 37.0% | 688 | 37.0% | 790 | 39.4% | 807 | 39.5% | 806 | 40.7% | 812 | 41.1% |
| | Female | | 1149 | 64.0% | 1153 | 63.1% | 1146 | 63.0% | 1173 | 63.0% | 1213 | 60.6% | 1238 | 60.5% | 1172 | 59.3% | 1163 | 58.9% |
| TOTAL | | 1795 | | 1828 | | 1819 | | 1861 | | 2003 | | 2045 | | 1978 | | 1975 | | |

| UCAS APPLICATIONS | | | | | | | | | | | | | | | | | |
|--------------------------|---------------------|-------------------|-------|------------------|-------|------------------|-------|------------------|-------|------------------|-------|------------------|-------|------------------|-------|------------------|-------|
| | | Entry Year | | | | | | | | | | | | | | | |
| | | 2004/2005 | | 2005/2006 | | 2006/2007 | | 2007/2008 | | 2008/2009 | | 2009/2010 | | 2010/2011 | | 2011/2012 | |
| Age | 17 and under | 430 | 15.5% | 413 | 15.2% | 352 | 13.7% | 309 | 12.2% | 318 | 12.5% | 287 | 12.1% | 350 | 10.0% | 334 | 9.2% |
| | 18 | 1162 | 41.8% | 1151 | 42.5% | 1097 | 42.8% | 1001 | 39.7% | 1016 | 40.0% | 980 | 41.3% | 1149 | 32.9% | 1207 | 33.3% |
| | 19-20 | 649 | 23.4% | 617 | 22.8% | 621 | 24.2% | 674 | 26.7% | 669 | 26.3% | 590 | 24.8% | 1149 | 32.9% | 1240 | 34.2% |
| | 21 | 124 | 4.5% | 133 | 4.9% | 123 | 4.8% | 152 | 6.0% | 140 | 5.5% | 114 | 4.8% | 191 | 5.5% | 222 | 6.1% |
| | 22-24 | 211 | 7.6% | 201 | 7.4% | 164 | 6.4% | 187 | 7.4% | 198 | 7.8% | 179 | 7.5% | 322 | 9.2% | 315 | 8.7% |
| | 25-39 | 161 | 5.8% | 160 | 5.9% | 172 | 6.7% | 158 | 6.3% | 166 | 6.5% | 181 | 7.6% | 276 | 7.9% | 267 | 7.4% |
| | 40 and over | 40 | 1.4% | 36 | 1.3% | 37 | 1.4% | 43 | 1.7% | 34 | 1.3% | 44 | 1.9% | 58 | 1.7% | 38 | 1.0% |
| TOTAL | | 2777 | | 2711 | | 2566 | | 2524 | | 2541 | | 2375 | | 3495 | | 3623 | |
| UCAS ACCEPTANCES | | | | | | | | | | | | | | | | | |
| | | Entry Year | | | | | | | | | | | | | | | |
| | | 2004/2005 | | 2005/2006 | | 2006/2007 | | 2007/2008 | | 2008/2009 | | 2009/2010 | | 2010/2011 | | 2011/2012 | |
| Age | 17 and under | 55 | 14.0% | 48 | 12.8% | 26 | 7.7% | 24 | 6.9% | 32 | 9.1% | 36 | 9.8% | 27 | 7.3% | 27 | 8.1% |
| | 18 | 141 | 35.8% | 140 | 37.3% | 121 | 35.7% | 117 | 33.8% | 111 | 31.6% | 129 | 35.2% | 135 | 36.5% | 114 | 34.1% |
| | 19-20 | 109 | 27.7% | 105 | 28.0% | 111 | 32.7% | 108 | 31.2% | 115 | 32.8% | 96 | 26.2% | 111 | 30.0% | 111 | 33.2% |
| | 21 | 18 | 4.6% | 16 | 4.3% | 14 | 4.1% | 27 | 7.8% | 11 | 3.1% | 23 | 6.3% | 20 | 5.4% | 21 | 6.3% |
| | 22-24 | 38 | 9.6% | 34 | 9.1% | 28 | 8.3% | 35 | 10.1% | 37 | 10.5% | 39 | 10.7% | 32 | 8.6% | 23 | 6.9% |
| | 25-39 | 27 | 6.9% | 26 | 6.9% | 29 | 8.6% | 29 | 8.4% | 39 | 11.1% | 35 | 9.6% | 35 | 9.5% | 35 | 10.5% |
| | 40 and over | 6 | 1.5% | 6 | 1.6% | 10 | 2.9% | 6 | 1.7% | 6 | 1.7% | 8 | 2.2% | 10 | 2.7% | 3 | 0.9% |
| TOTAL | | 394 | | 375 | | 339 | | 346 | | 351 | | 366 | | 370 | | 334 | |
| ALL STUDENTS | | | | | | | | | | | | | | | | | |
| | | Entry Year | | | | | | | | | | | | | | | |
| | | 2004/2005 | | 2005/2006 | | 2006/2007 | | 2007/2008 | | 2008/2009 | | 2009/2010 | | 2010/2011 | | 2011/2012 | |
| Age | 17 and under | 178 | 9.9% | 173 | 9.5% | 146 | 8.0% | 154 | 8.3% | 182 | 9.1% | 160 | 7.8% | 163 | 8.2% | 51 | 2.6% |
| | 18 | 450 | 25.1% | 471 | 25.8% | 454 | 25.0% | 446 | 24.0% | 495 | 24.7% | 507 | 24.8% | 525 | 26.5% | 188 | 9.5% |
| | 19-20 | 464 | 25.8% | 455 | 24.9% | 483 | 26.6% | 512 | 27.5% | 567 | 28.3% | 577 | 28.2% | 530 | 26.8% | 555 | 28.1% |
| | 21 | 115 | 6.4% | 97 | 5.3% | 95 | 5.2% | 108 | 5.8% | 107 | 5.3% | 116 | 5.7% | 97 | 4.9% | 260 | 13.2% |
| | 22-24 | 254 | 14.2% | 277 | 15.2% | 275 | 15.1% | 267 | 14.3% | 305 | 15.2% | 320 | 15.6% | 294 | 14.9% | 464 | 23.5% |
| | 25-39 | 263 | 14.7% | 281 | 15.4% | 285 | 15.7% | 285 | 15.3% | 273 | 13.6% | 304 | 14.9% | 301 | 15.2% | 391 | 19.8% |
| | 40 and over | 71 | 4.0% | 74 | 4.0% | 79 | 4.3% | 89 | 4.8% | 74 | 3.7% | 61 | 3.0% | 68 | 3.4% | 66 | 3.3% |
| TOTAL | | 1795 | | 1828 | | 1819 | | 1861 | | 2003 | | 2045 | | 1978 | | 1975 | |

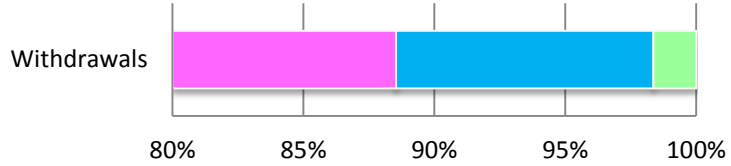


Age



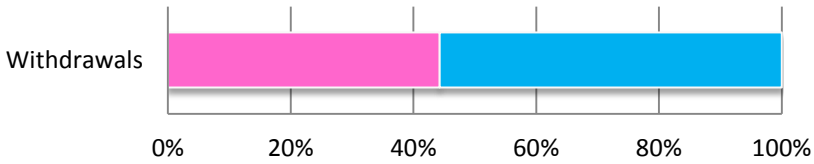
| Withdrawals | |
|--------------|----|
| 17 and under | 2 |
| 18 | 4 |
| 19-20 | 9 |
| 21 | 6 |
| 22-24 | 16 |
| 25-39 | 20 |
| 40 and over | 4 |

Ethnicity



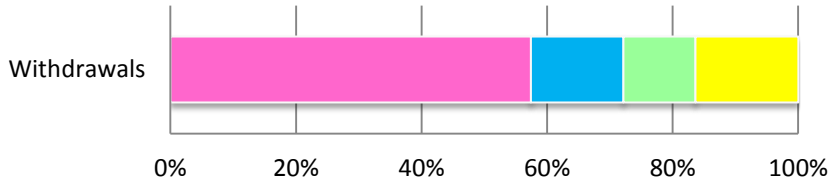
| Withdrawals | |
|-------------------------------|----|
| White | 54 |
| BME | 6 |
| Not Known/Information Refused | 1 |

Gender



| Withdrawals | |
|-------------|----|
| Male | 27 |
| Female | 34 |

Domicile



| Withdrawals | |
|-------------|----|
| Home | 35 |
| RUK | 9 |
| EU | 7 |
| Overseas | 10 |